



# NOMAN

TERRY TOWEL MILLS LTD.







# NOMAN GROUP AT A GLANCE

We are Pioneers. Perfectionists. Progressives.



## EST 1968

Founded by Md. Nurul Islam

## LARGEST

Vertically Integrated Textile Group in Bangladesh

## HIGHEST

Exports compared to any company in Bangladesh

## REVENUE

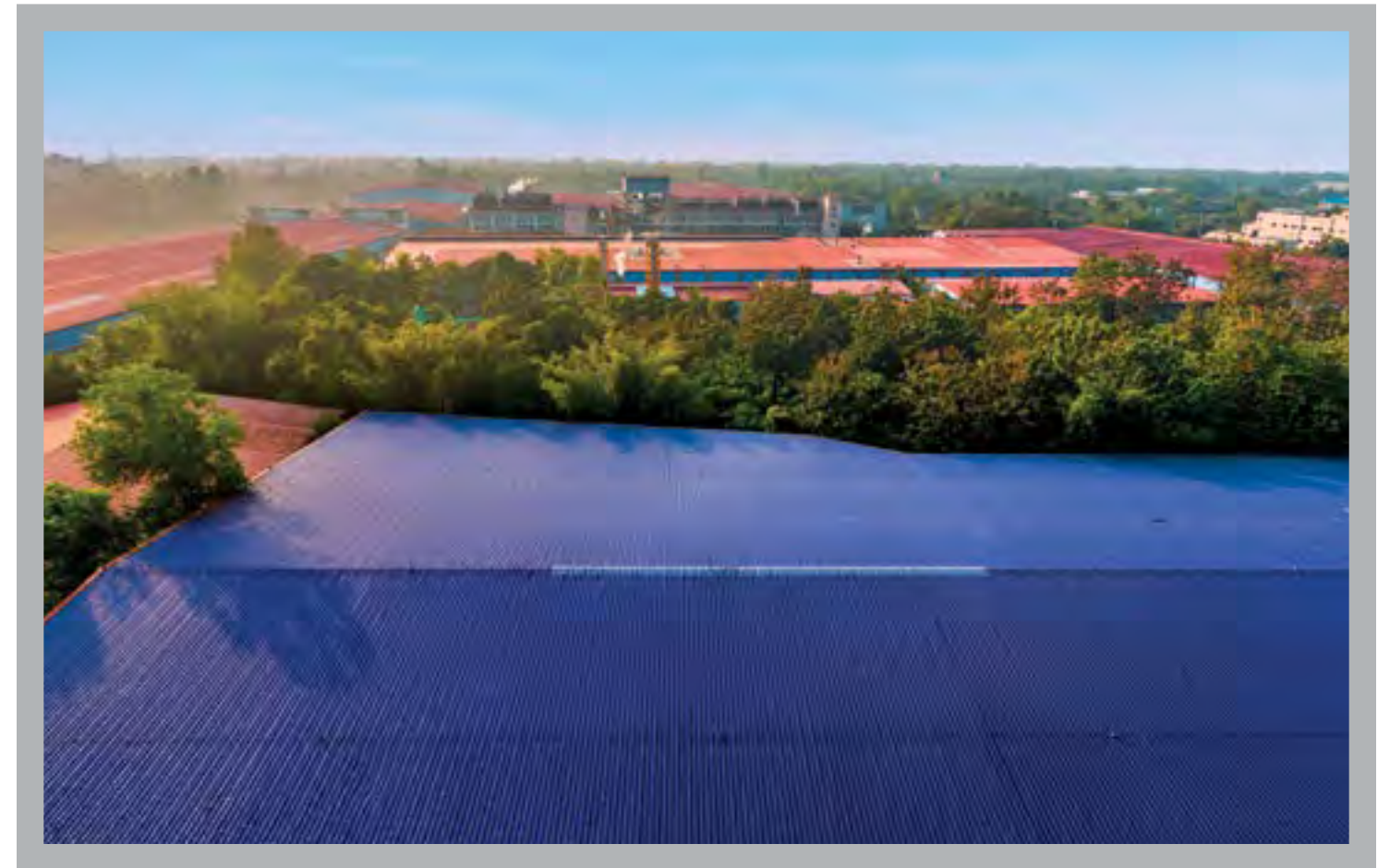
1 Billion US Dollars In 2016

## PRODUCTS

Terry Towel, Denim, Woven Fabric, Home Textiles, Warp Knitted Fabric, Garments



# UNITS OF NOMAN GROUP



**Yasmin Spinning Mills Ltd.**  
Spinning with 80,000 Spindles

**Zaber Spinning Mills Ltd.**  
Spinning with 75,000 Spindles

**Marium Textile Mills Ltd.**  
Producing Synthetic Fabrics

**Noman Textile Mills Ltd.**  
Weaving Unit with 238 Air Jet Looms

**Ismail Textile Mills Ltd.**  
Weaving Unit with 232 Air Jet Looms

**Zaber & Zubair Fabrics Ltd.**  
Vertically Integrated Textile Mills (Fashion & Home)

**Yasmin Textile Mills**  
Weaving Unit with 156 Shuttle-less Looms

**Noman Spinning Mills Ltd.**  
Open-End Yarn Manufacturing Unit

**Ismail-Anjuman Ara Fabrics Ltd.**  
Dyeing, Printing & Finishing Unit

**Sufia Cotton Mills Ltd.**  
Spinning with 60,000 Spindles

**Zubair Spinning Mills Ltd.**  
Spinning with 75,000 Spindles

**Sufia Fabrics Ltd.**  
Producing Synthetic Fabrics

**Noman Weaving Mills Ltd.**  
Weaving Unit with 232 Air Jet Looms & 156 Shuttle-less Looms

**Noman Composite Ltd.**  
Weaving Unit with 440 Air Jet Looms

**Nice Denim Mills Ltd.**  
Vertically Integrated Denim Factory

**Saad Saan Apparels Ltd.**  
40 Lines of Stitching Units for Woven Bottoms

**Zaber & Zubair Accessories Ltd.**  
Woven & Printed Labels, Threads & all other accessories

**Talha Spinning Mills Ltd.**  
Spinning with 60,000 Spindles

**Artex Fabrics Ltd.**  
Largest Warp Knitted Fabric Manufacturing in Asia

**Talha Fabrics Ltd.**  
Weaving Unit with 480 Air Jet Looms & 183 Shuttle-less Looms

**Saad Saan Textile Mills Ltd.**  
Weaving Unit with 1200 Shuttle-less Looms

**Talha Tex Pro Ltd.**  
Dyeing, Printing & Finishing Unit

**Zarba Textile Mills Ltd.**  
Textile Product (100% Export Oriented)

**Zarba Rotor Spinning Mills Ltd.**  
Open-End Yarn Producing Facility (32 tons per day)

**Noman Fashion Fabrics Ltd.**  
25 Lines of Stitching Units for Woven Tops





# VISION, MISSION & VALUES



“We are what we believe in.”

## OUR VISION

To create a sustainable manufacturing excellence in textile realm and pursue loyal customer and people

## OUR MISSION

**Consumer** satisfaction by ensuring quality textile products with full commitment to compliance.

**Social** responsibility as a global corporate citizen by ensuring growth and security of employees as well as stakeholders.

**Environmental** well-being through collaborations with area businesses, community leaders and neighbors resulting in a sustainable future.

## OUR VALUES

### 1. Keeping Our Planet Green

This planet is our only home; we must manufacture responsibly. Our Environmental Compliance and Sustainability Goals are met 100% of the time.

### 2. Safe and Secure life

Employees are the hands that make the brand. At Noman we train, mentor and ensure safe, healthy working as well as living conditions for our workers.

### 3. Market Leadership

Our goal is to remain years ahead in innovation & implementation. As a pioneer in the market of textile manufacturing, Noman Group has illuminated the way for those with sound and successful business ideologies for decades.

### 4. Learning and Sharing

Constant growth can only be achieved through constant learning. We operate each day with this exact philosophy in mind.

### 5. Creating an Example

We constantly strive to be the best, because we believe in leading by example.





# A FEW WORDS



## FROM OUR CHAIRMAN

Noman Group has evolved into a creditable contributor to the textile industry. Our high quality products and dedicated workforce are our biggest assets. By forging its ideals with modern technologies, Noman Group is helping its customers gain new heights. We are a proud part of the success stories of our clients.

Since its inception, Noman Group has established itself to be a trailblazer and it plans to continue that tradition. In 2018, Noman Group plans to fully operate with Oracle ERP system in all its subsidiaries with emphasis on Big Data and Data-Driven Approach. The Group is turning towards filament and synthetic yarn manufacturing for its active wear and technical textile, shifting boundaries into new territories. Bangladesh, being a hub for textile, ushers further opportunities for growth and we intend on capitalizing on this potential by diversifying into different product technologies and experimenting with new materials.

In recent times, the business climate has not been consistently welcoming. Bangladesh is facing rising utility costs. In response, we are re-engineering our business process from the stretch. Our team members, led by bona fide, quality leaders in respective Strategic Business Units, are working relentlessly to minimize the impact of rising costs on our valued customers.

At a time when emerging technologies like Artificial Intelligence and Internet of Things are becoming a significant part of the narrative of the industry, Noman Group is preparing itself for a transformation. We understand the importance of adapting to the changing industry structure and we are embracing the future. Noman Group is investing in automation and business process engineering. Gradually, we are introducing robotics in the manufacturing process. By launching the ERP system, we have obtained stronger control over financial activities. We have also gained access to quality real-time data, which enables us to make sound decisions with fewer errors.

Sustainability is an integral part of the overall objective of Noman Group. Our idea of sustainability encompasses community elevation, environmental footprint reduction and innovation. All the cotton that we source are 99% BCI cotton. Keeping our employees at the heart of our community engagement program, we have introduced Better Wage Initiatives. In addition to that, we have organized Fair Trade, Detox, EMS and other initiatives. Our commitment to sustainability is proven by our actions.

We believe that Noman Group harnesses its true power from its human capital. Our employees are at the core of our health, safety and security plan. We take the well-being of our team members seriously and have invested heavily on OHSAS and ISO 27000. If our workers are well taken care of, we would be in a position to serve our customers better – keeping this simply philosophy in mind, we ensure that every worker's rights are upheld.

Our passion for achieving excellence drives us to deliver the highest quality products to our customer. It would not have been possible without a consorted effort of all of our key stakeholders including our employees, partners, suppliers as well as the guidance of our valuable customers. With an optimistic set of mind, we look forward to accepting the challenges the future holds. We would like to continue to move forward and upward. We aim to break new grounds and be the benchmark in the industry. Please join us in setting newer milestones and climbing higher altitudes.

Md. Nurul Islam





## FROM OUR CEO

It is with great pride that I address our NTTML family and our beloved clients.

Since its inception in 2012, NTTML has accomplished many achievements never before encountered in the textile industry of Bangladesh. Our leading pace to our sound business culture, our deep understanding of clients' needs and our strong advocacy towards "green," sustainable and responsible manufacturing. Operational agility regarding innovation and technological adaptability is essential to keep up with the global textile industry, and we strive to do so.

Our clients come first; identifying their requirements and exceeding their expectations is the driving force that pulls us towards our eagerness to deliver. While we are focused on our core services, we acknowledge how important the role of NTTML as a corporate citizen is, in advocating for equal opportunity employment and setting benchmarks for environmental compliance around the country.

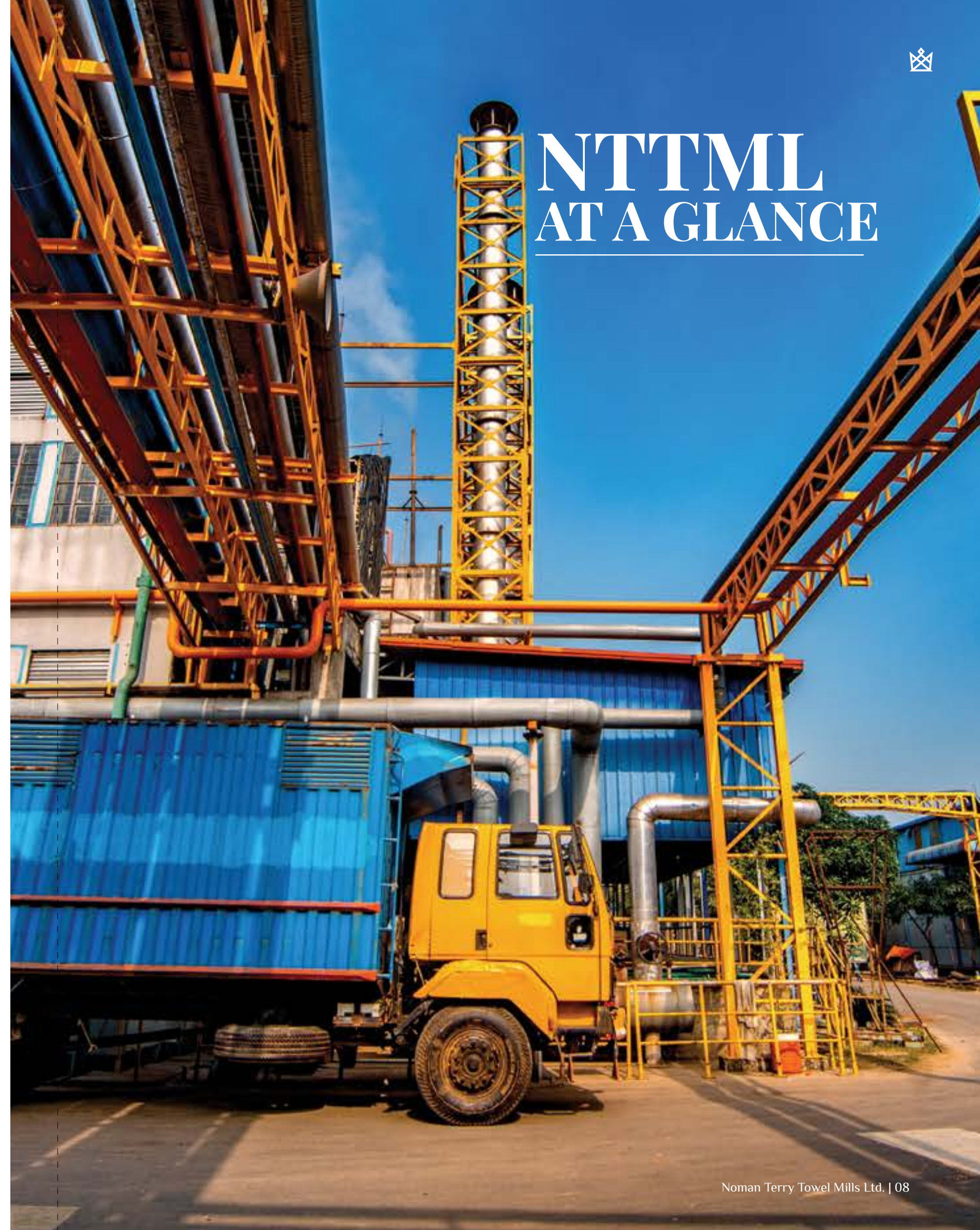
I have always believed that the only way to be satisfied with one's work is to pursue excellence, and our organizational vision and mission is precisely that.

We eagerly ask your support to continue this journey as pioneers in a fast-paced world, creating value for our stakeholders and ensuring a beautiful future for us all, socially and environmentally.

ABDULLAH MOHAMMAD TALHA



## NTTML AT A GLANCE







# NTTML AT A GLANCE

 **7200**  
Workers

 **90 Million**  
US dollars revenue in 2018

 **Highest Capacity**  
in Bangladesh 80 tons Terry and 25 tons yarn dyed /day

 **Largest Effluent Treatment Plant**  
(ETP) employed in Bangladesh





# SPINNING CAPACITY



“  
Every masterpiece  
starts from scratch.”



Total Spinning Units  
11



Number of Spindles  
500,000



Yarn Production  
350 M. Tons/day



Cotton Consumed (in 2018)  
150,000 tons





# WEAVING CAPACITY



“  
Imagination  
materialized.”



Daily Weaving Production  
80 tons



Total Looms  
346



Air Jet  
346



Jacquard  
36



Dobby  
310

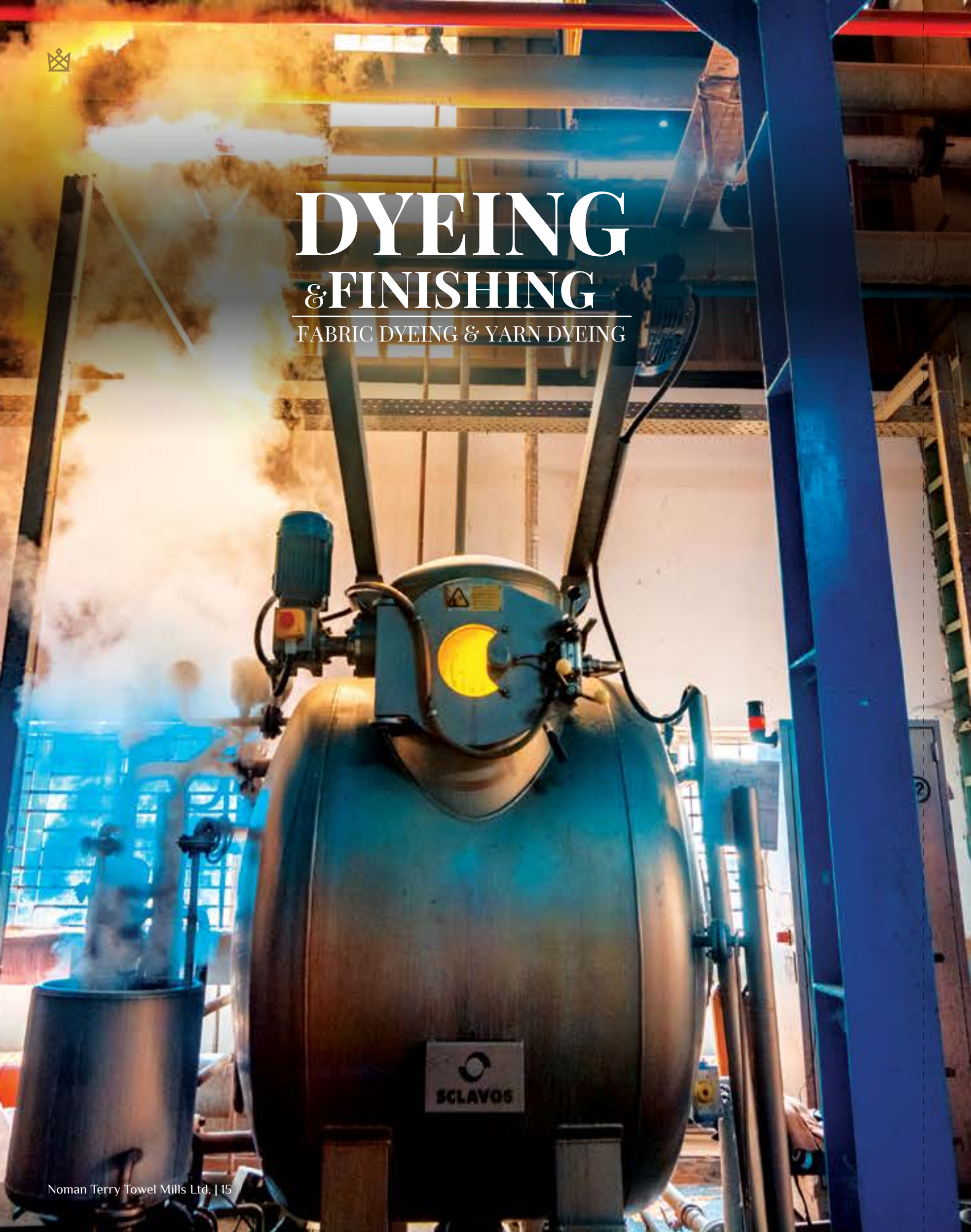


Special Terry Motion  
153



Color Insertion  
Jacquard 6 Dobby 8





# DYEING & FINISHING

FABRIC DYEING & YARN DYEING

## Solid Dyed



Machine  
Sclavos



Daily Capacity  
80 MT



Exhaust  
80 MT



Total Machine  
28



Sample Machine  
05



Velour  
03

## Yarn Dyed



Machine  
THIES (Germany)



Daily Capacity  
25 tons



Total Machine  
37



Sample Machine  
14





# STITCHING

## EMBROIDERY & PACKING



## Stitching



**Machine**  
TEXPA Automation in Slitting and Stitching



**Total Machine**  
1300



**Daily Capacity**  
75 MT



### Advantages of Automation

- ♦ Reduce the dependency on people
- ♦ Higher output with precise quality
- ♦ Reduce manufacturing cost
- ♦ Reduce waste
- ♦ Increase run time

## Embroidery



**Total Machine**  
06



**Total Head**  
130



**Color**  
9



**Materials**  
Cotton, Viscose, Modal  
Bamboo, Lyocell, Polyester  
Re-cycle Cotton  
Recycle Polyester  
Linen and any blend





# ACCESSORIES

We employ in-house solutions.



## Printing

- ◆ In-lay Card
- ◆ Barcode
- ◆ Hand-tag
- ◆ Back Board
- ◆ Stickers
- ◆ Shipping Marks



## Printed Labels

- ◆ Paper Label
- ◆ Satin Label



## Packaging

- ◆ Cartons
- ◆ Paper Palette
- ◆ Stiffener
- ◆ Poly Bag (PE, PP, PVC, Ziploc)
- ◆ Hanger Bag (PE, PP, PVC)
- ◆ PVC Zipper Bag
- ◆ PVC Rod Bag
- ◆ Loop Barrels





# STRATEGIC PARTNERS



“  
Smart partners  
equal smart business.”



## Machineries

PICANOL

BENNINGER

TEXPA

brother

Thies

TSUDAKOMA

TOYOTA

monforts

KARL MAYER  
WE CARE ABOUT YOUR FUTURE

RIETER

JUKI

SCLAVOS

PANTEK

ANGLADA

DORNIER  
TECHNOLOGY

xetma  
Vollenweider



## Raw Material

allenberg cotton co.

Cargill

Olam

REINHART  
SINCE 1788



## Chemicals

HUNTSMAN

BASF

DyStar

ARCHROMA

RUDOLF GROUP

Pulcra Chemicals

CHT  
BEZEMA



## Banking

HSBC

Standard Chartered

DBBL



## Logistics

MAERSK LINE

DHL

TNT

FedEx





# PRODUCT FINISHES



“  
A vision  
come to life.”



Bleach Resistant



Cosmetic Care



Hydrophilic



Anti-Bacterial



Bleach Fast



Quick Dry



Air Reach Treatment



Soil Release



Denim Wash



Stone Wash



Anti-Static



Anti-Pilling



Fragrance Finish



Shrink-Resistance



Hybrid Finish



Temperature Regulator Finish





# QUALITY IN FOCUS



“Ensured. Everytime.”



## Quality in Focus

- ◆ ISO 9001 certified
- ◆ Believe in prevention
- ◆ In-house testing facilities
- ◆ Periodic calibration of all inspector and technician
- ◆ System approach to remove the deviation from source



## Process Control Tools Used

- ◆ Receiving inspection
- ◆ Zero defect approach
- ◆ SIPOC
- ◆ Quality Management System
- ◆ Failure Mode Effect Analysis
- ◆ Control plan
- ◆ CTQ (Critical to quality) control
- ◆ Measurement System Analysis
- ◆ COPQ (Cost of Poor Quality) monitoring



## Process Improvement Tools Used

- ◆ Kaizen project
- ◆ Lean project
- ◆ Six Sigma Project
- ◆ Annual improvement plan
- ◆ Octopus activities
- ◆ Voice of customer
- ◆ Voice of process
- ◆ Open the box activities
- ◆ Learning Box
- ◆ GEMBA
- ◆ SPC





# SUSTAINABILITY



## “Energy Renewable. Reusable. Responsible.”



**Solar Panel**  
200 KW. WE WILL BE ABLE TO REDUCE  
292 tons of CO<sub>2</sub> emission/year



**PaCT**  
Reduce groundwater consumption  
& surface water pollution



**LED Light**  
100% of all bulbs used in our facilities use  
LED technology



**Better Cotton Initiatives**  
Consume 7500 MT of BCI annually





# ENVIRONMENTAL COMPLIANCE



“  
Mother Nature  
deserves better.  
So we built the BEST ETP in Bangladesh.



Biological Effluent Treatment Plant (Panta-Rei of ITALY)



Spectrophotometer & Thermo-reactor (COD test)



BOD sensor with incubator (BOD test)



Multi-meter (TDS, pH, DO, temperature etc.)



Zero Liquid Discharge by 2020





# CERTIFICATION



“We are trusted”

OEKO-TEX®  
CONFIDENCE IN TEXTILES







# SUMMARY



“  
Simply  
extraordinary.”



**Ownership**  
100% privately owned



**Number of Employee**  
7200



**Minimum Order Quantity**  
1 container (negotiable)/ 10 tons, 800 kg per color



**Material of Towel**  
Cotton, Blended, Jutton, Lyocell, Modal, Viscose, Solucell



**GSM Range**  
240-1200



**Mode of Payment**  
L/C at sight, TT or negotiable



**Sample Development Time**  
2 weeks



**Lead Time**  
60 days (1st order), 45 days (repeat order)



**Capacity**  
210 (40 feet) containers per month





[www.nttml.com](http://www.nttml.com)

**N O M A N**  
TERRY TOWEL MILLS LTD.

+880 1709-646899  
(+88 02) 9852906

[info@nttml.com](mailto:info@nttml.com)

House 19, Road 44, Gulshan 2,  
Dhaka-1212, Bangladesh